

DEC 2024

# Finishing Standards Guide

Minimum Standards External Concrete Finish

This document outlines the external finish that can be expected on our range of pools delivered within Australia.

The external shell of all Plungie pools are finished and delivered to a Class 2 concrete standard (Standards Australia AS 3610–1995).

## General Information

Our range of Plungies are produced using advanced manufacturing methods under factory-controlled conditions. The concrete used for every pool is quality tested before being poured and the nature of concrete means some natural variation to colour and mould design, may occur for each pool when finished.

These variations are normal and do not have an impact on the structural integrity of each pool. Our pools are checked at every stage of production to ensure a quality product leaves the factory.

The following guide outlines some of the variations that can be expected for how your pool will arrive on site. All Plungies are finished in accordance with a Standards Australia Class 2 (AS 3610-1995) concrete finish.

All images in this guide are presented as examples of what could be expected while still being delivered to Class 2 standard. No images in this guide show unacceptable finishes.

All images shown have been taken of an actual Plungie and are presented 'as is' with no digital alterations at any stage.

## Design Notes

For installations that require an architectural finish or particular design aesthetic we recommend the application of a suitable coating undertaken by a professional.

**At no time should the surface of your Plungie be ground or modified by removing concrete or ecoFinish material.** Doing so will void the 10 year manufacturer warranty of the pool and risks the structural integrity of the pool.

# Blowholes

Blowholes (also known as bug holes) are individual rounded or irregular cavities that are formed against the formwork in the manufacturing process. Small blowholes tend to be approximately hemispherical in shape with no pattern to where they are located on the external of our pool shells.

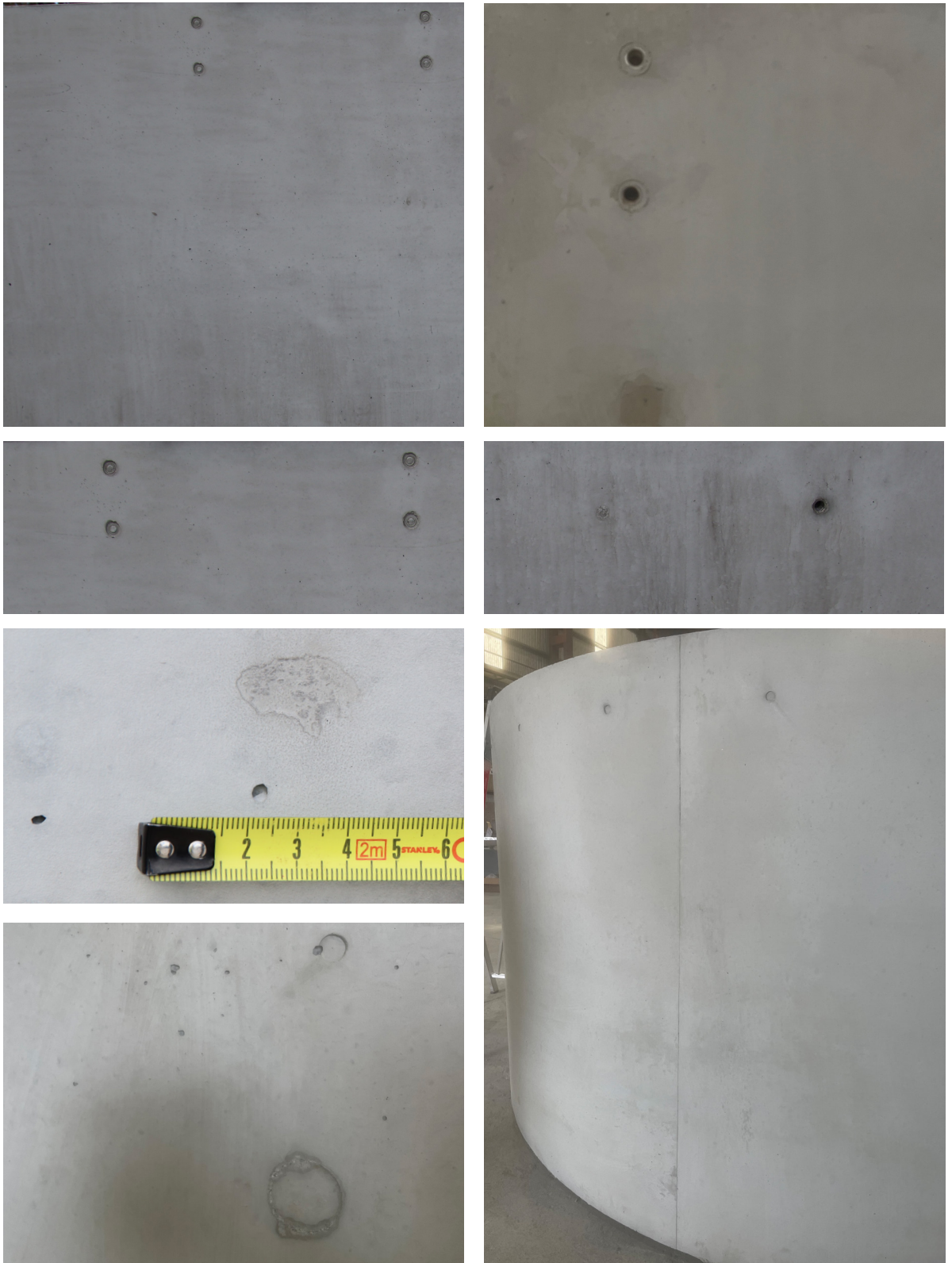
The following images show what could be reasonably expected for size, frequency and location of blowholes on each Plungie and constitute a Class 2 finish.



Note: The bubbles that show on the underside surfaces of stairs etc are normal and not visible in most installations. These are unavoidable due to mould design and have no impact on the overall structure of the pool.

# Surface Details

Some minor markings may also be present on the surface from the casting process or due to minor rectification work for blowholes, that were deemed larger than a Class 2 finish. These markings are superficial only and do not present a structural risk.

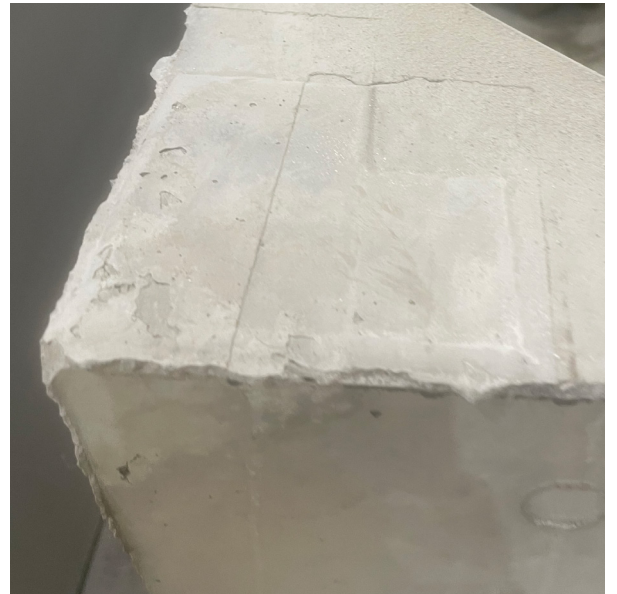


These images show what can be reasonably expected on each Plungie and still constitute a Class 2 finish.



# Surface Details - Top Edge

Due to the nature of precast concrete, the top edge of your Plungie is not always to an architectural finish standard. Some small and slight imperfections caused by the moulding process may exist.



To maximise the aesthetic appeal and longevity of your Plungie we highly recommend the use of a coping tile. This will not only improve the look but also help protect the concrete and ecoFinish surface from wear and tear.

Coping tiles can easily be added to the pool, however, we don't sell them directly.

As with all concrete casting, variations in markings and the colour of the outer concrete could also be expected due to material variances in the concrete mix. As well as colouring of the concrete itself, some transfer of colour may occur from the moulding process leaving a light reddish/rust tinge.



The above imagery shows the shades that can be expected while remaining within the set standards.

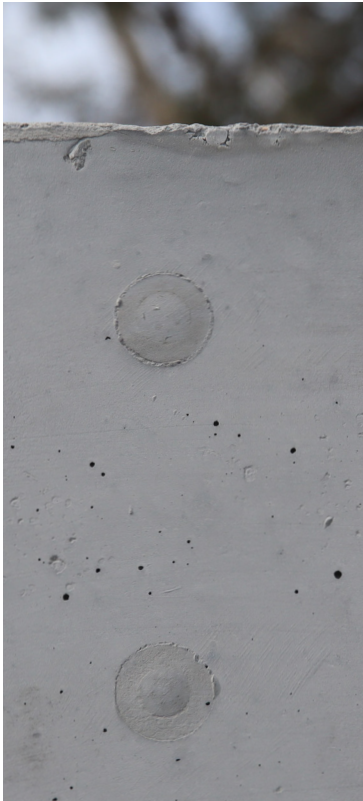


# Ferrules

Our Plungies are designed and engineered to be used either with or without fencing, doweling or decking ferrules near the top edge of the pool. These are installed at the time of casting and cannot be retrofitted. Some pools may be manufactured with evidence on the surface of where these ferrules would be installed. They pose no issue to the finish and structural integrity of the pool.

Lifting and tie-down ferrules (M20 / M24) are located on all Plungie's (refer to pool specification documents for positions and lifting instructions) as requirements to be able to deliver and install each pool. Markings may be present around these points as a normal part of the transportation process.

**NO  
FERRULES INCLUDED**



**FENCING/DOWLING/  
DECKING  
FERRULES INCLUDED**



**LIFTING/TIE-DOWN  
FERRULE**



## NOTE:

Fencing ferrules can only be included at the time of ordering. If you require ferrules as part of your pool project please advise when placing your order as they cannot be retrofitted.



[www.plungie.com](http://www.plungie.com)  
1300 PLUNGIE (758 644)